



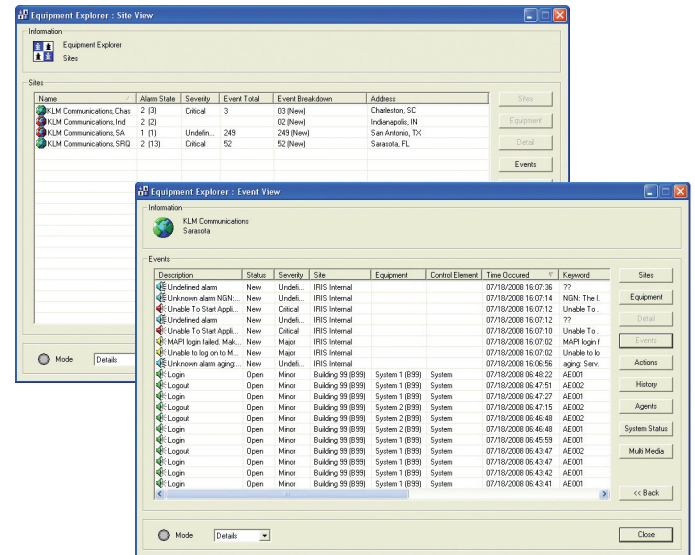
# IRISnGEN Equipment Explorer

## Equipment Explorer Ensures Proactive Fault Resolution

Equipment Explorer provides real-time status of bi-polar events and allows point-and-click control actions to execute directly to monitored equipment or network elements for proactive fault resolution. Designed to work with systems or elements that use contacts or TTL voltage output to indicate alarm and status conditions, Equipment Explorer ensures that minor alarm conditions do not escalate to service affecting outages. Combined with scripts in the SEB NET-PATH®, Equipment Explorer also supports TBOS, a widely used management protocol for radio, telecommunications and industrial systems. This approach also monitors other devices such as wind velocity sensors, thermocouples, and strain gauges.

IRISnGEN is an event-based system displaying new events in the alarm viewer as they occur. The status of the event in the viewer is completely controlled by the Network Operations Center (NOC) personnel who modify the event status by manually changing it to open or closed. Closing the event does not correct the fault or change the status of the host that reported the event. Equipment Explorer handles events in a different manner by employing a new iconic viewer to provide real-time status information for monitored sites or equipment at specific sites. Equipment Explorer works in concert with IRISnGEN Basic Alarms and the MapViewer module to provide the best of both worlds.

The Equipment Explorer module uses TCP/IP and is well suited for military, manufacturing, or process control applications that utilize large numbers of sensors to indicate status. If the status of equipment or an element changes after reporting an event, Equipment Explorer reflects the new status rather than the previously reported condition. Color-coding of the status icons indicates whether the status is normal or abnormal. An audio file is associated with an incoming event to alert NOC technicians. Equipment



Explorer also provides NOC technicians the ability to manipulate or control the monitored equipment by executing predefined actions directly from the Equipment Explorer viewer. If the technician's action corrects or changes the condition, Equipment Explorer automatically reflects the changed status of the equipment or element. Equipment Explorer provides different "views" relating to sites or equipment. These multiple views, with color-coded icons, present a comprehensive picture of conditions at a particular site or the entire system. Views are displayed as icons, lists or details. The color of an icon within a view indicates whether an alarm condition is present and the severity of the alarm. By drilling down to examine an alarm condition, the views change to reflect the functional level.



# IRISnGEN Equipment Explorer

Available views include:

- **Site View** – displays all sites according to user-defined selectivity.
- **Equipment View** – displays the configured equipment at a site.
- **Event View** – provides a system-wide and/or site-specific view of sites and events and allows the opening or closing of events.
- **Remote Agent** – displays the status of all MedTel Services Remote Agent units. Agents may be pinged or rebooted from this view.
- **Action View** – displays available actions for a site or equipment and executes the action.
- **Detail View** – lists all the control elements for a specific piece of equipment. This View also displays the last known equipment Status and the time received. Status is requested from this view.
- **History View** – lists a history of all the actions, as well as status, ping or reboot requests executed on a particular site.
- **System Status** – Displays all equipment or elements in an alarm state and dynamically updates as alarms occur or clear.

Right mouse controls as well as double-clicking are used extensively for navigation and control of Equipment Explorer. In the Site View for example, after double-clicking on a site, the resultant view depends upon whether the site is in an alarm condition. If any equipment at the site is in an alarm condition, double-clicking on the applicable site will display a System Status View that lists all the Control Elements that are in an alarm state. If there are no alarms, an Equipment View is presented that displays all equipment configured at the site.

Corrective measures for equipment or elements are initiated through actions that are defined for the site or equipment. Actions normally consist of activating a relay or performing a script function within the SEB NET-PATH. The Action view provides a list of the predefined actions for a site that are executable against equipment. A pop-up dialog box provides

© 2012 MedTel Services, LLC

Specifications subject to change without notice. MedTel Services is a registered trademark of MedTel Services, LLC All other products mentioned are the trademarks of their respective owners.

P/N: 612-3050-0012 Rev. D