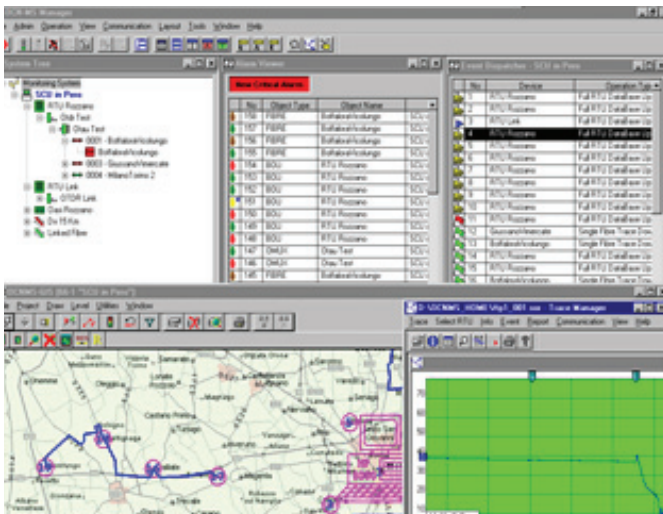




MedTel Services Alarms Management

Legacy & IP Telephony Monitoring At Its Finest.

Insight into the health and vitality of your voice and data network elements starts with a proactive alarms management solution.



PROACTIVE REMOTE ALARMS MANAGEMENT.

MedTel Services Alarms Management is intelligent monitoring and management at its finest, affording single-point visibility and control of all your monitored systems! This multi-platform solution consists of two major components: IRISnGEN – a powerful, centralized management GUI application for your Network Operations Center (NOC) and SEB NET-PATH – a series of remote agent appliances that monitor your network components. Together, these items provide complete endpoint management for your voice and data components.



AT THE CENTER OF IT ALL

As businesses grow, the challenges of tracking & responding to maintenance problems grow too. IRISnGEN and SEB NET-PATH easily monitor millions of messages and maintain thousands of PBXs, voicemail systems, IVR systems, network elements and contact closure devices such as fire alarms or door sensors.



SEB NET-PATHm

A compact, cost-effective appliance designed for less complex or SMB environments. SEB NET-PATHm offers plenty of features for monitoring up to two serial devices, five network devices and much more.

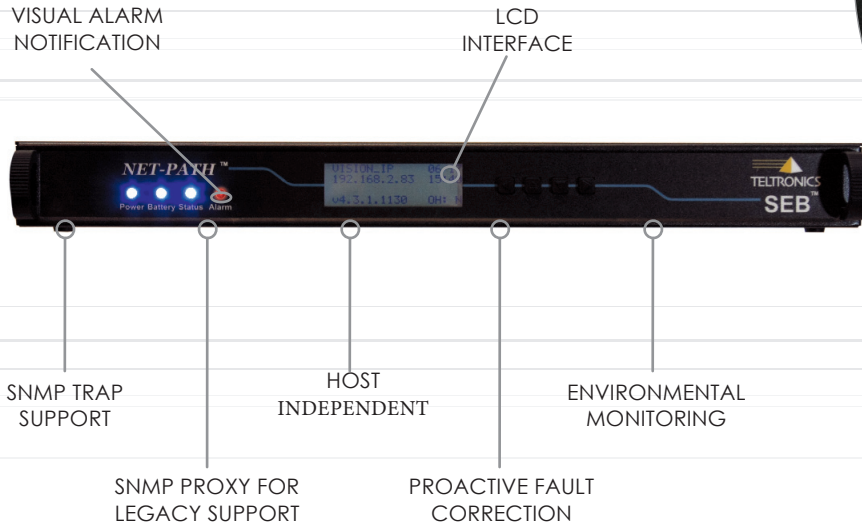
- ▲ Support monitoring of 2 serial ports
- ▲ Support monitoring of 5 network ports
- ▲ 4 external contact sensors
- ▲ 16 MB of flash memory AND 64 MB SDRAM
- ▲ 2 SEB NET-PATHm's fit side-by-side in a 19" rack
- ▲ Built-in UPS for 15 minute backup power operation
- ▲ Lithium battery for real-time clock
- ▲ Universal 110/220 VAC power supply
- ▲ Internal modem



SEB NET-PATH

MedTel Services' flagship alarms management agent. The SEB NET-PATH can monitor up to eight serial devices and twenty network devices, as well as internal and ambient temperature, DC voltage and other environmental conditions.

- ▲ Support monitoring of 4 or 8 serial ports
- ▲ Support monitoring of 20 network ports
- ▲ 8 or 16 external contact sensors
- ▲ 2 SPDT relays
- ▲ 32MB of flash memory AND 128 MB SDRAM
- ▲ Front panel LCD display
- ▲ Built-in UPS for 2 hours of operation
- ▲ Lithium battery for real-time clock
- ▲ Universal 110/220 VAC or DC power options
- ▲ Internal modem



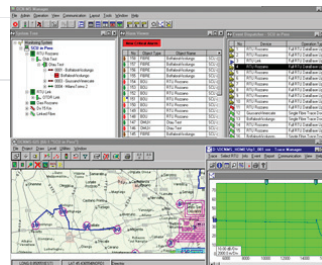
BENEFITS AT A GLANCE.



SEB NET-PATH PLUS

In addition to all of the features of the SEB NET-PATH, this full featured appliance houses a secure router that boasts an ICSA compliant firewall technology highly resistant to intrusion attempts.

- ▲ VPN Capable
- ▲ IPSec, Peer-to-Peer and PPTP tunneling protocols
- ▲ 4 serial devices
- ▲ 20 network devices
- ▲ 8 or 16 external contact sensors
- ▲ 2 SPDT relays
- ▲ 32MB of flash memory AND 128 MB SDRAM
- ▲ Front panel LCD display
- ▲ Built-in UPS for 2 hours of operation
- ▲ Lithium battery for real-time clock
- ▲ Universal 110/220 VAC or DC power options
- ▲ Internal modem



IRISnGEN

IRISnGEN's centralized configuration, management, and communication facilities enable key efficiencies that save time and effort in on-boarding new systems and managing installed base.

- ▲ Element and Vendor independent monitoring
- ▲ Normalized, easy-to-read alarm format
- ▲ Immediate connectivity into on-site systems
- ▲ Alarm filtering and thresholding
- ▲ Multi-level alarms escalation
- ▲ Agent-based and Agent-less alarms monitoring
- ▲ Email-based alarms monitoring

- Protected capital investment with vendor independent architecture
- ▲ Proactive fault detection and resolution
- ▲ Potential crisis identified and avoided
- ▲ Issues resolved quickly and effectively
- ▲ Automated system expertise resolves issues quickly and effectively
- ▲ Lower phone costs with minimized calls into the NOC
- ▲ Enhanced efficiency and productivity
- ▲ Improved customer satisfaction
- ▲ Increased ROI
- ▲ Fewer truck rolls

SEB NET-PATH SPECIFICATIONS

| FEATURE | DESCRIPTION | SEB II ¹ | SEB NET-PATH | SEB NET-PATHm | SEB NET-PATH PLUS |
|----------------------------------|---|--|---|--------------------------|---|
| Communication Ports | RS232, RJ45 | 5 ports | 4 or 8 ports | 2 ports | 4 ports |
| Network | 10/100 Base-T | - | ✓ | ✓ | ✓ |
| Contact Sensors | Hard contact sensors (wet contacts) | ✓ | 8 or 16 sensors | 4 sensors | 8 sensors |
| Modem | 56 Kbps, Class 2 fax | internal or external modem | 1 internal modem | 1 internal modem | 1 internal modem |
| Memory | Program storage / Data storage | 512KB / 2MB | 32MB Flash 128MB SDRAM | 16MB Flash 64MB SDRAM | 32MB Flash 128MB SDRAM |
| Segment Manager (option) | SNMP elements managed | - | 10 or 20 | 5 | 10 or 20 |
| Output Controls | Controlled output devices | - | 2 SPDT relays 200 ma | - | 2 SPDT relays 200 ma |
| Integrated Analog Sensors | For reporting temperature and voltage | - | 1 temperature (50-110F) 1 DC voltage (0-60VDC) | - | 1 temperature (50-110F) 1 DC voltage (0-60VDC) |
| System Power | Universal power supply / DC power supply | - | 110/220 VAC 48 VDC | 110/220 VAC | 110/220 VAC 48 VDC |
| Battery Backup | Integrated UPS: maintains full function up to 2 hrs | ✓ | ✓ | ✓ | ✓ |
| RTC Sleep Battery | Long-term backup for real time clock | ✓ | ✓ | ✓ | ✓ |
| Diagnostics | LCD display: system information & diagnostics | ✓ | ✓ | ✓ | ✓ |
| Watchdog | Watchdog timer | ✓ | ✓ | ✓ | ✓ |
| Mounting Configuration | 19" rack and desktop | desktop | both | desktop | both |
| Dimensions | Height x Width x Depth | 3" x 9.75 x 12" | 1.75 (UI)" x 18" x 10.5" | 1.82" x 9.75 x 11" | 1.75 (UI)" x 18" x 10.5" |
| Secure Router | VPN server | - | - | - | ✓ |
| Enhanced Authentication (option) | 2-Factor token-based secure access | - | ✓ | ✓ | ✓ |
| Operating Environment | Temperature | Operating: 50-110 degrees F Non-operating: 20 - 140 degrees F Relative humidity, non-condensing: 20% - 80% | | | |

IRISnGEN SPECIFICATIONS

| SERVER HARDWARE <i>(includes 3 year basic warranty)</i> | UPS HARDWARE | COMMUNICATION HARDWARE | SOFTWARE |
|--|----------------------------------|--|--------------------------------|
| Dell PowerEdge R610-Rackmount | ALI Elite UPS, Rack Mount XL1500 | 8PT PCI Express PERLE Card w/ DB25 Pin Male Fanout Cable | MS Windows Server 2003 or 2008 |
| Intel Xeon E5620 Processor | SNMP Interface Port, ALI Elite | Modem - 56K External | MS SQL Server 2005 or 2008 |
| 4GB Memory - 1333MHz | | Maintenance Modem V.90 56k PCI Internal | |
| 2 - 250GB SATA with RAID 1 controller | | | |
| Dual embedded NICs | | | |
| DVD ROM | | | |
| Keyboard & Mouse; 17" LCD Monitor | | | |

¹ Manufacturer discontinued product. Listed for comparison purposes only. ©2012 MedTel Services LLC Specifications subject to change without notice. MedTel Services and the MedTel Services logo are the trademarks, registered or not, of MedTel Services LLC. All other products are the trademarks of their respective owners.

² 2 LAN / 1 WAN