

# SEB NET-PATH® SPECIFICATIONS

FEATURE	DESCRIPTION	SEB NET-PATH	SEB NET-PATHm	SEB NET-PATH PLUS
Communication Ports	RS232, RJ45	4 or 8 ports	2 ports	4 ports
Network	10/100 Base-T	✓	✓	✓
Contact Sensors	Hard contact sensors (wet contacts)	8 or 16 sensors	4 sensors	8 sensors
Modem	56 Kbps, Class 2 fax	1 internal modem	1 internal modem	1 internal modem
Memory	Program storage / Data storage	32MB Flash 128MB SDRAM	16MB Flash 64MB SDRAM	32MB Flash 128MB SDRAM
Segment Manager (option)	SNMP elements managed	10 or 20	5	10 or 20
Output Controls	Controlled output devices	2 SPDT relays 200 ma	-	2 SPDT relays 200 ma
Integrated Analog Sensors	For reporting temperature and voltage	1 temperature (50-110° F) 1 DC voltage (0-60VDC)	-	1 temperature (50-110° F) 1 DC voltage (0-60VDC)
System Power	Universal power supply / DC power supply	110/220 VAC 48 VDC	110/220 VAC	110/220 VAC 48 VDC
Battery Backup	Integrated UPS: maintains full function up to 2 hrs	✓	✓	✓
RTC Sleep Battery	Long-term backup for real time clock	✓	✓	✓
Diagnostics	LCD display: system information & diagnostics	✓	✓	✓
Watchdog	Watchdog timer	✓	✓	✓
Mounting Configuration	19" rack and desktop	both	desktop	both
Dimensions	Height x Width x Depth	1.75" x 18" x 10.5"	1.82" x 9.75" x 11"	1.75" x 18" x 10.5"
Secure Router	VPN server	-	-	✓ 2 Lan 1 Wan
Enhanced Authentication (option)	2-Factor token-based secure access	✓	✓	✓
Operating Environment	Temperature & Humidity	Operating: 50 - 110° F Non-operating: 20 - 140° F Relative humidity, non-condensing: 20 - 80%		

# IRISnGEN® SPECIFICATIONS

SERVER HARDWARE <i>(includes 3 year DELL basic warranty)</i>	UPS HARDWARE	COMMUNICATION HARDWARE	SOFTWARE
Dell PowerEdge R610-Rackmount	ALI Elite UPS, Rack Mount XL1500	8PT PCI Express PERLE Card w/ DB25 Pin Male Fanout Cable	MS Windows Server 2003 or 2008
Intel Xeon E5620 Processor	SNMP Interface Port, ALI Elite	Modem - 56k External	MS SQL Server 2005 or 2008
4GB Memory - 1333MHz		Maint. Modem V.90 56k PCI Internal	
2 - 250GB SATA with RAID 1 Controller			
Dual embedded NICs			
DVD ROM			
Keyboard, Mouse & 17" LCD Monitor			

©2013 MedTel Services, LLC. Specifications subject to change without notice. MedTel Services, NET-PATH, NET-PATHm, NET-PATH PLUS, IRISnGEN, *Ideas That Communicate* and the MedTel Services logo are the trademarks or registered trademarks of MedTel Services, LLC. All other products are the trademarks of their respective owners.

941.753.5000  
800.434.8358

[www.medtelservices.com](http://www.medtelservices.com)

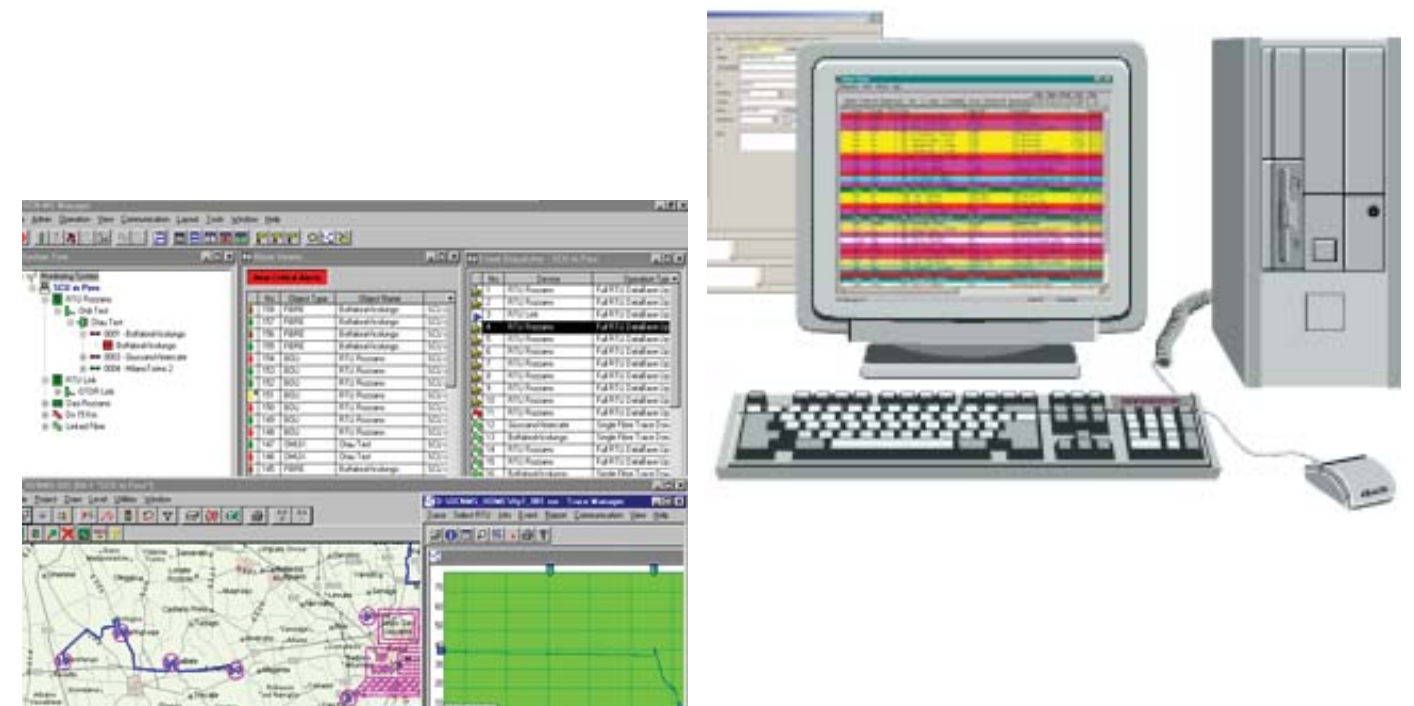


P/N: 612-1020-0058 Rev D

# MedTel Services™ Alarms Management

## Legacy & IP Telephony Monitoring At Its Finest

Insight into the health and vitality of your voice and data network elements starts with a proactive alarms management solution.



## PROACTIVE REMOTE ALARMS MANAGEMENT

MedTel Services™ Alarms Management is intelligent monitoring and management at its finest, affording single-point visibility and control of all your monitored systems! This multi-platform solution consists of two major components:

**IRISnGEN®** – a powerful, centralized management GUI application for your Network Operations Center (NOC)

**SEB NET-PATH®** – a series of remote agent appliances that monitor your network components. Together, these items provide complete endpoint management for your voice and data components



### AT THE CENTER OF IT ALL

*As businesses grow, the challenges of tracking & responding to maintenance problems grow too. IRISnGEN® and SEB NET-PATH® easily monitor millions of messages and maintain thousands of PBXs, voicemail systems, IVR systems, network elements and contact closure devices such as fire alarms or door sensors.*



### SEB NET-PATHm®

A compact, cost-effective appliance designed for less complex or SMB environments. SEB NET-PATHm offers plenty of features for monitoring up to two serial devices, five network devices and much more.

- ▲ Support monitoring of 2 serial ports
- ▲ Support monitoring of 5 network ports
- ▲ 4 external contact sensors
- ▲ 16 MB of flash memory & 64 MB SDRAM
- ▲ 2 SEB NET-PATHm's fit side-by-side in a 19" rack
- ▲ Built-in UPS for 15 minute backup power operation
- ▲ Lithium battery for real-time clock
- ▲ Universal 110/220 VAC power supply
- ▲ Internal modem



### SEB NET-PATH®

MedTel Services' flagship alarms management agent. The SEB NET-PATH can monitor up to eight serial devices and twenty network devices, as well as internal and ambient temperature, DC voltage, and other environmental conditions.

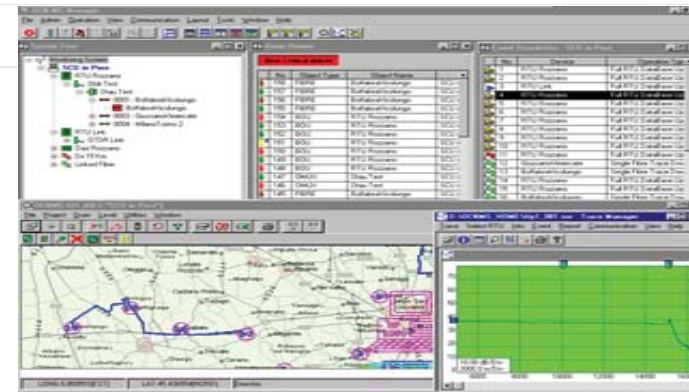
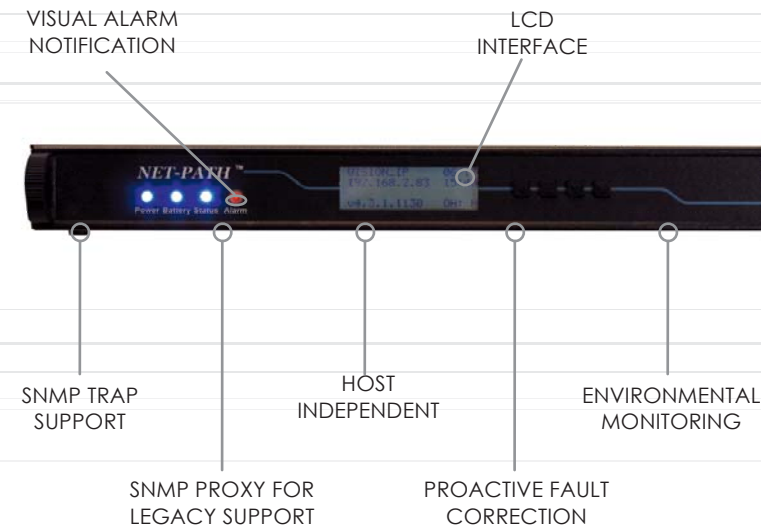
- ▲ Support monitoring of 4 or 8 serial ports
- ▲ Support monitoring of 20 network ports
- ▲ 8 or 16 external contact sensors
- ▲ 2 SPDT relays
- ▲ 32MB of flash memory & 128 MB SDRAM
- ▲ Front panel LCD display
- ▲ Built-in UPS for 2 hours of operation
- ▲ Lithium battery for real-time clock
- ▲ Universal 110/220 VAC or DC power options
- ▲ Internal modem



### SEB NET-PATH PLUS®

In addition to all of the features of the SEB NET-PATH, this full featured appliance houses a secure router that boasts an ICSA compliant firewall technology highly resistant to intrusion attempts.

- ▲ VPN Capable
- ▲ IPSec, Peer-to-Peer and PPTP tunneling protocols
- ▲ 4 serial devices
- ▲ 20 network devices
- ▲ 8 or 16 external contact sensors
- ▲ 2 SPDT relays
- ▲ 32MB of flash memory & 128 MB SDRAM
- ▲ Front panel LCD display
- ▲ Built-in UPS for 2 hours of operation
- ▲ Lithium battery for real-time clock
- ▲ Universal 110/220 VAC or DC power options
- ▲ Internal modem



### IRISnGEN®

IRISnGEN's centralized configuration, management, and communication facilities enable key efficiencies that save time and effort in on-boarding new systems and managing installed base.

- ▲ Element and Vendor independent monitoring
- ▲ Normalized, easy-to-read alarm format
- ▲ Immediate connectivity into on-site systems
- ▲ Alarm filtering and thresholding
- ▲ Multi-level alarms escalation
- ▲ Agent-based and Agent-less alarms monitoring
- ▲ Email-based alarms monitoring

### BENEFITS AT A GLANCE

- ☒ Protected capital investment with vendor independent architecture
- ▲ Proactive fault detection and resolution
- ▲ Potential crisis identified and avoided
- ▲ Issues resolved quickly and effectively
- ▲ Automated system expertise resolves issues quickly and effectively
- ▲ Lower phone costs with minimized calls into the NOC
- ▲ Enhanced efficiency and productivity
- ▲ Improved customer satisfaction
- ▲ Increased ROI
- ▲ Fewer truck rolls